

# Contents

## Introduction

### SYSTEM REQUIREMENTS

## Installation

### Windows 95, Windows 98, Windows NT 4.0

### Baby Animals

## Setting up a screen saver

### Installation of each saver

## Settings

### Wallpaper, Security, Display

### Changing savers

## BONUS PROGRAMS

### Separate manuals

### Yet more bonuses

## SUPPORT

### Our proud tradition of support

### Voice

### Web page

### E-Mail

### Fax

### Internet

## Acknowledgments

### Special Thanks

# SYSTEM REQUIREMENTS

Operating System

Disk Space

Hardware

## **Operating System**

Your computer must have Microsoft Windows 95, Windows 98, Microsoft Windows NT 4.0, or higher versions of these operating systems.

## **Disk Space**

This program requires approximately 12 megabytes of space on your hard drive. Additional space is required as you install screen savers.

## Hardware



A mouse or pointing device is required.



To access our web site you must have a modem and a connection to the Internet.

## **Windows 95, Windows 98, Windows NT 4.0**

1. Place the CD into your CD-ROM drive.
2. In the start-up screen click on START, then click on RUN.
3. Type in D:\CDSETUP and press Enter. (If your CD-ROM drive is not D, then change it to the letter associated with your CD-ROM drive.)
4. Follow any instructions that appear on the screen.

## **Baby Animals**

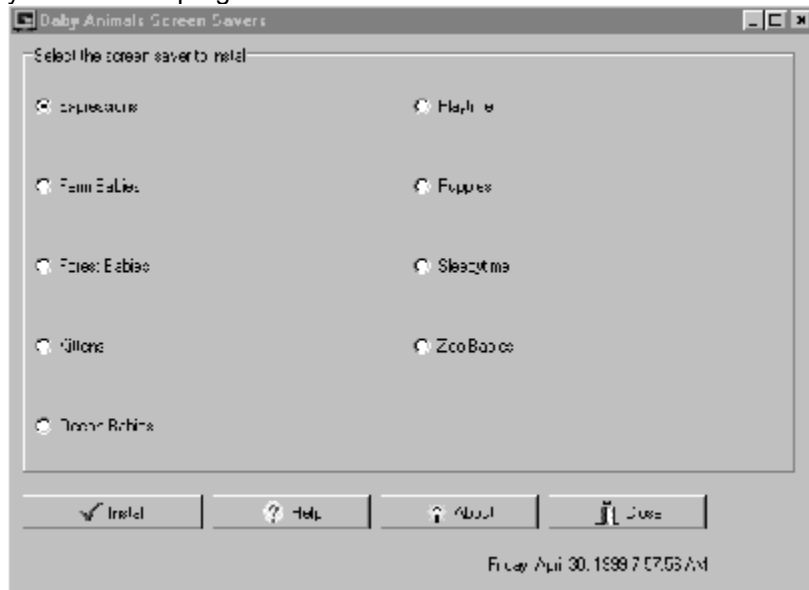
Baby Animals provides you with 20 different screen savers containing beautiful images of farm animals, zoo babies and more from around the world.

## Installation of each saver

Each screen saver is provided in a "package" file. **A screen saver must be installed in Windows before it can be used.** This is only required to be done *once for each individual screen saver*. This is a requirement of Windows.

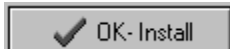
Baby Animals provides an automated setup for each screen saver.

To select a screen saver to install, run the SAVER program. A shortcut for this program is created when you install the program:



### Main menu

To install a screen saver, click on the saver of your choice, and then click on the install button:



You will then be able to install the screen saver and make it available for your use.

You will see the program installed.

**See**

[Other options](#)



## **Other options**

The HELP button activates help (this file)

The ABOUT button show copyright and version information

The CLOSE button ends the program and returns to Windows.

## Wallpaper, Security, Display

After the screen saver is installed, you will then see the following display:



*Screen Saver after install*

**See**

[Preview](#)

[Settings](#)

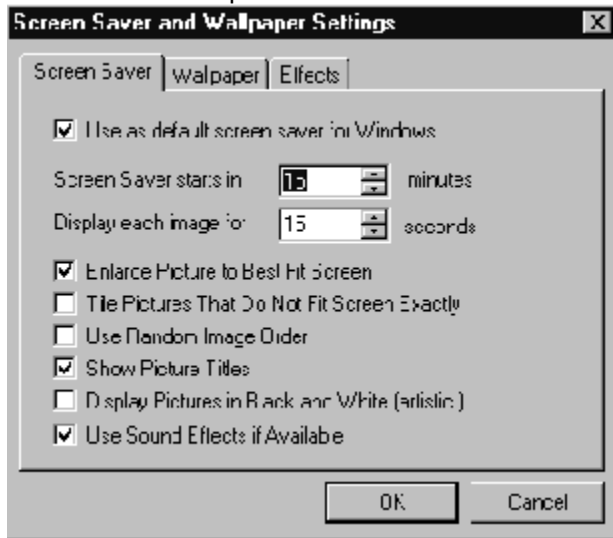
[Effects page](#)

## **Preview**

The preview choice shows you the screen saver without needing to wait for the system to be idle.

# Settings

This is the most important button. You will see the following "tabbed notebook:"



*Settings*

**See**

[Screen Saver page](#)

[Wallpaper page](#)

## **Screen Saver page**

If you select USE AS DEFAULT SCREEN SAVER, the saver currently on the screen will become the saver activated when you are idle. You may select when the saver starts, and how long each image will be shown.

The other advanced settings on the Screen Saver page include:

Enlarge pictures to Best fit (recommended)

Tile pictures (not recommended)

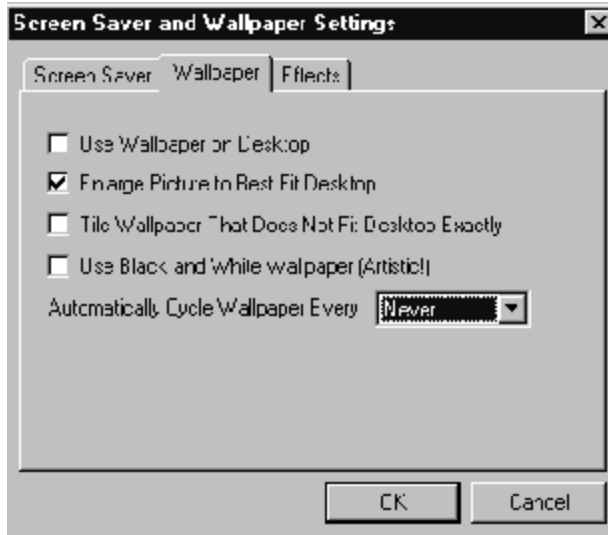
Use random image order (matter of personal taste)

Show Picture tiles (strongly recommended)

Display pictures in black and white (strongly recommended)

Use sound effects (matter of personal taste)

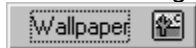
## Wallpaper page



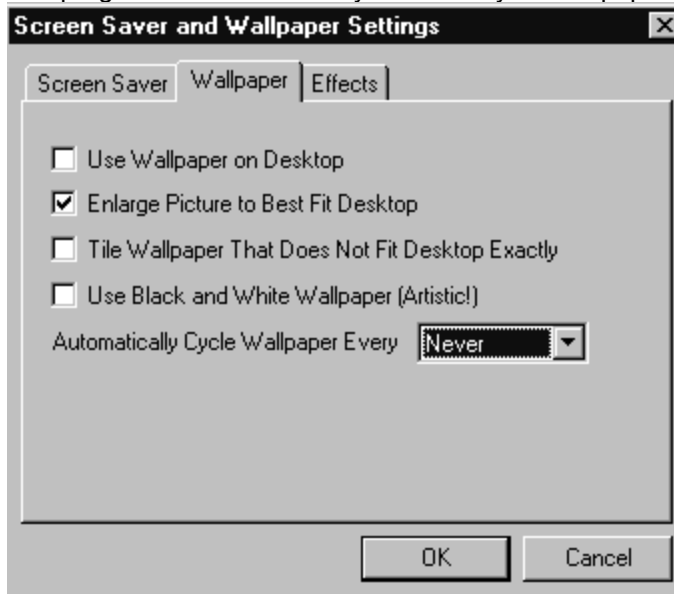
### Wallpaper

Wallpaper are the images displayed on your desktop. You may switch between several different wallpaper tiles.

To use an image as wallpaper, highlight the image and then click on the Wallpaper button:



The program will automatically make this your wallpaper.



The other advanced settings on the Wallpaper page include:

Use Wallpaper on Desktop (matter of personal taste)

Tile Wallpaper (not recommended)

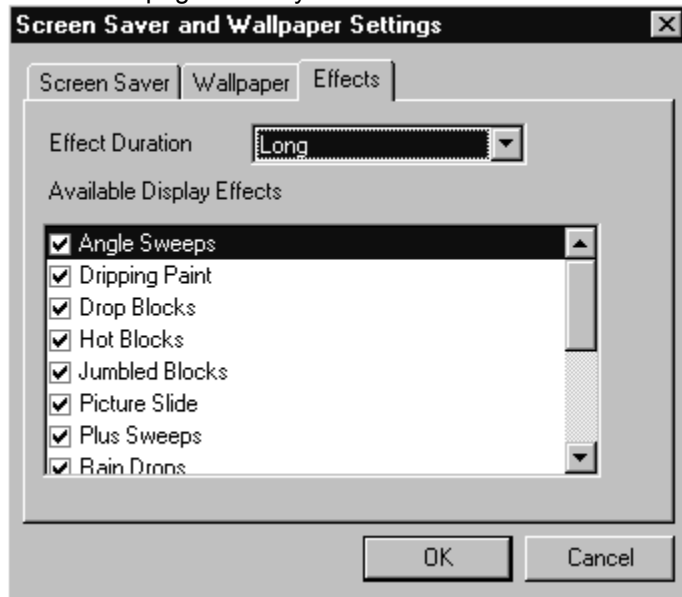
Display pictures in black and white (matter of personal taste)

Automatically cycle (matter of personal taste)



## Effects page

The effects page allows you to select which effects will be used between images.

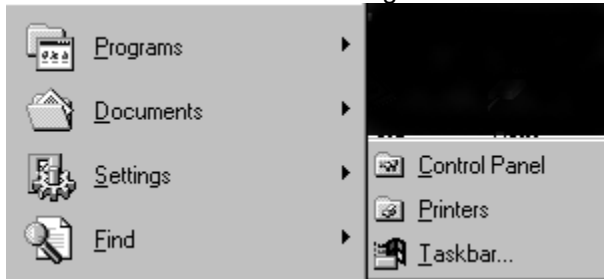


Select these as you see fit.



## Changing savers

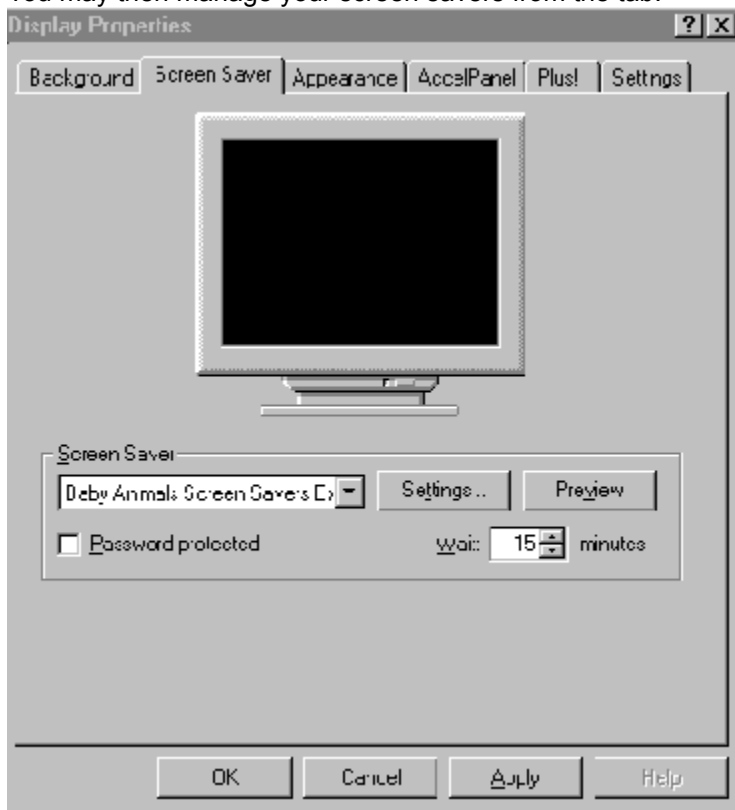
After you have installed a screen saver ONCE, you may select it or change to no saver, or to any other screen saver. This is done through the Windows Control Panel:



To reach the control panel, rest your cursor on Settings and then Control Panel. Then select DISPLAY:



You may then manage your screen savers from the tab:



The settings which you used when you installed a saver are recognized by Windows. You may change the settings as you see fit.

For more information on the settings, please consult Windows help.

## **Separate manuals**

Separate manuals are provided for the bonus programs: Sliding Picture Puzzle Challenge, Sound Effects Sampler, Create your Own Screen Saver and Top 20 Solid Gold Games.

## **Yet more bonuses**

Visit us on the web at: [www.lrhsavers.com](http://www.lrhsavers.com) regularly for freebies just for you!

## **Our proud tradition of support**

We encourage all of our users to provide comments and suggestions about this program. This program is supported by voice, fax and Internet e-mail.

## **Voice**

For telephone support, call COSMI's Customer Service at (310) 886-3510 during the hours below.  
(Note: All times are in the Pacific Standard Time zone.)

Monday through Thursday, 8:30 a.m. - 12:00 noon and 1:00 p.m. - 4:00 p.m.

Friday, 8:30 a.m. – 12:00 noon.

Ö COSMI is very proud to be one of the few remaining software publishers to provide no charge customer support!

## **Web page**

Visit our web page: [www.lrhsavers.com](http://www.lrhsavers.com)

## **E-Mail**

Support questions may be addressed to: [support@cosmi.com](mailto:support@cosmi.com).

## **Fax**

You may fax us at (310) 886-3517.



## **Internet**

Be sure to visit COSMI's Internet Web site: <http://www.cosmi.com>.

## **Special Thanks**

Team COSMI, the only fully integrated software developer and publisher in the budget software industry, wishes to give special thanks to Team COSMI members who made special contributions to this program:

Programming: Amy Seeberger

Packaging: Susan Randle and David Serrano

Testing/In house Programming: John Passo, Carol Dunn, Emerald Burke

